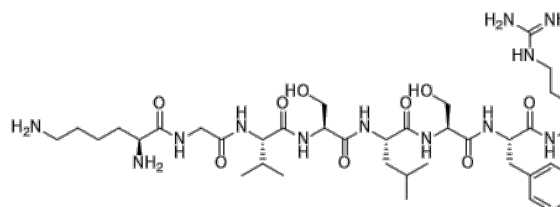


Product Name : CTCE-9908
Cat. No. : PC-23668
CAS No. : 1030384-98-5
Molecular Formula : C₈₆H₁₄₇N₂₇O₂₃
Molecular Weight : 1927.29
Target : Chemokine Receptor (CCR and CXCR)
Solubility : 10 mM in DMSO



Biological Activity

CTCE-9908 is a potent and selective CXCR4 antagonist, induces mitotic catastrophe in ovarian cancer cells.
CTCE-9908 inhibits migration and growth in CXCR4-expressing ovarian cancer cells.
CTCE-9908 induces multinucleation and G2-M arrest in ovarian cancer cells.
CTCE-9908 induces DNA re-replication and abnormal mitoses in ovarian cancer cells.
CTCE-9908 significantly reduced lung metastasis of osteosarcoma and melanoma cells in animal models.

References

- Kim SY, et al. Clin Exp Metastasis. 2008;25(3):201-11.
Porvasnik S, et al. Prostate. 2009 Sep 15;69(13):1460-9.
Kwong J, et al. Mol Cancer Ther. 2009 Jul;8(7):1893-905.

Caution: Product has not been fully validated for medical applications. Lab Use Only!

E-mail: tech@probechem.com